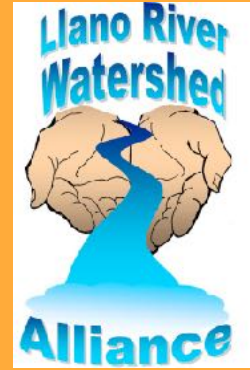


WATERSHED WEEK IN REVIEW



Mystery Location Game

Round Eight Answer

No one came up with the answer to last week's Mystery Location. It was difficult, but the exercise was to provide prospective.

Llano Watershed

4,466 square miles

Country of Qatar

4,468 square miles

If we were our own country, we would be the 165 largest country in the world, just ahead of Jamaica.

30.639419° -99.571352°

Oil Pipeline Proposed for South Llano Recharge Zone

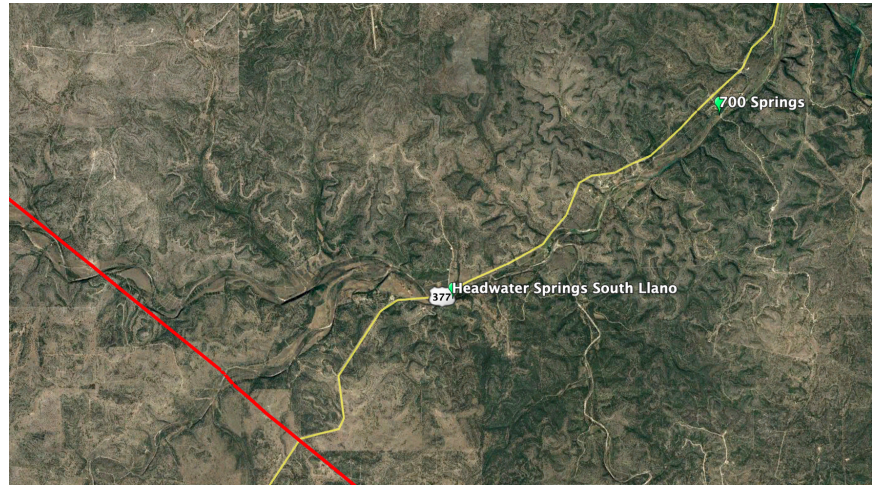
Last week, the Rivard Report broke the story of a crude oil pipeline proposed to run from the Permian Basin to Wilson County southeast of San Antonio. The story focuses concerns that the proposed route crosses the recharge zone of the Edwards Aquifer, the main water supply for over two million people in Central Texas. What raises additional concerns for the LRWA is that the proposed route also crosses the recharge zone for the South Llano River, **three miles above the headwater springs of the river**



Oil Pipeline Concerns for the South Llano (continued)

which include the iconic 700 Springs.

According to the Texas Railroad Commission database, there are already several pipelines that cross the Llano River. The majority of these pipelines, including the proposed Kinder-Morgan pipeline, carry natural gas. Only one crude-oil pipeline, the Longhorn



Pipeline owned by Magellan Crude Oil, crosses the Llano south of London in eastern Kimble County. (A crude oil pipeline owned by Shell that used to follow Interstate 10 west of Junction is no longer in use.)

In 2017, a contractor working on the Longhorn pipeline near Bastrop struck a fitting leaking 87,000 gallons of crude oil onto the ground. This was the 7th largest spill in the state since 2009. Fortunately, none of the oil reached waterways, but according to the Austin Statesman, 74,000 gallons of the crude were not recovered.

In 1979, operator error resulted in 1.06 million gallons spilling from the Longhorn Pipeline in Kimble County south of London. The spill flowed overland about a mile, reaching an unnamed tributary of the Llano River. According to an assessment of the spill site, an earthen dam on the tributary fortunately stopped the spill from reaching the Llano, two miles downstream. According to the assessment, the spill nearly topped the dam.

The proposed pipeline across the South Llano recharge zone would be owned by Enterprise Product Partners (EP). According to the Railroad Commission,



the pipeline would run about 3 miles from the headwater springs of the South Llano and about eight miles from 700 Springs. The route also crosses within 500 yards of a known aquifer recharge feature (pictured left); it is very probable there are other similar recharge features in this karst area of

the watershed.

Karst areas contain numerous caves, fractures and conduits that **permit water to quickly travel from the surface to the aquifer, in some cases over thousands of feet per day. As one gallon of oil can contaminate up to one million gallons of water, an oil spill that reaches the aquifer would cause significant damage to area springs and waterways and remediation likely would be impossible.**

The Alliance fully understands the importance of oil and gas to the economy, but has grave concerns for the South Llano River should an accident occur along the pipeline's proposed route. While pipelines have many safeguards, spills still result, often due to human error.

Randa Duncan Williams, who recently purchased *Texas Monthly*, is chairwoman of Enterprise Product Partners and a noted Texas history buff. Hopefully, she will give some consideration to what impacts the pipeline could have on one of the South Llano's most iconic and historic spots, not to mention the source of our water supply.

Save the Date

Become a Water Quality Monitor

Texas Stream Team and Llano River Watershed Alliance are hosting a Water Quality Monitor Training at the Castell General Store, **Friday, Oct 25th, from 9am-1pm.**

Lunch will be provided.

Attendance is limited. RSVP
at
southllanoriver@gmail.com

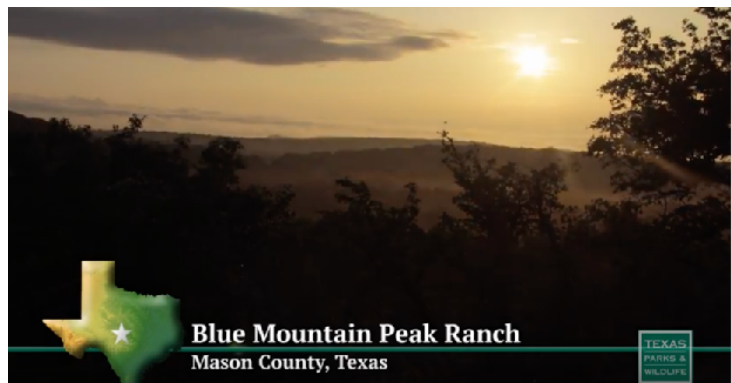


Next Member's Landowner Tour October 20, 2019 9:30am-12:30pm Blue Mountain Peak Ranch

Members of the Alliance will have the opportunity to tour Blue Mountain Peak Ranch in Mason County next month. Owner Richard Taylor and partner Suzie Paris are the 2016 Sand County Foundation Leopold Conservation Award Recipient, focusing on increasing species diversity and putting more water back into the aquifer.

Join Today!

Please RSVP to southllanoriver@gmail.com



Alliance and Partners host Stewardship Opportunity Workshops

OCT
18
2019



Caring for Your Land

When: October 4 (Blanco) and October 18 (Llano), 2019

Where: Blanco and Llano, TX

Hosted By: Hill Country Conservancy along with a collaboration of partners

Who: All are welcome!

Caring for Your Land- Incentives for Stewardship and Conservation

Hosted by Hill Country Conservancy along with a collaboration of partners



Workshop Overview:

Private landowners ensure the health and productivity of the Hill Country's land, water, and wildlife, often without recognition or reward. The Hill Country Headwaters Conservation Initiative (HCHCI) is an innovative program made up of numerous partners, which provides financial and educational resources to private landowners seeking to leave their land better than they found it. This workshop will detail tools and financial incentives to help you care for your land, now and forever.

Program Topics:

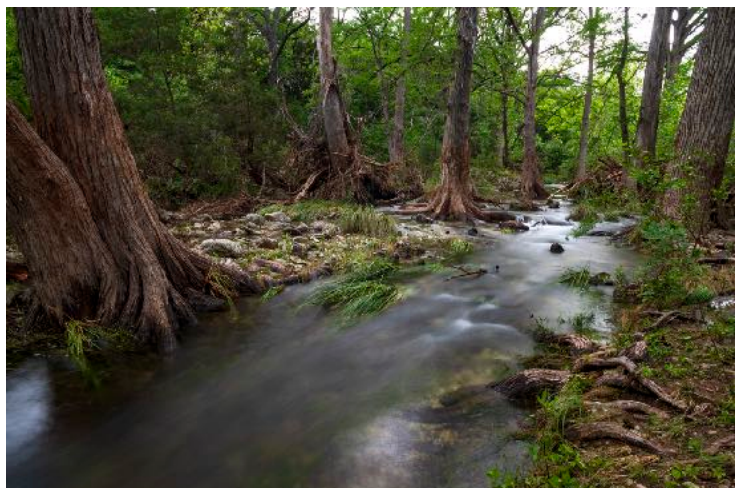
- Vision and Partners
- Financial Assistance Programs
- Land Stewardship - Best Practices and Case Studies
- Conservation Easements 101
- Application Process and Timelines
- Landowner Testimonials

Admission: FREE but limited, please register below.

Event Dates: October 4th, 2019 (Blanco) & October 18th, 2019 (Llano)

Questions about this event?

Contact Iliana Peña, TWA Director of Conservation Programs
IPena@texas-wildlife.org



Alliance Participation in Resource Conservation Partnership Program benefits Watershed Landowners

Today, the Natural Resource Conservation Service obligated \$497,000 to nine projects selected as part of the Hill Country Headwaters Conservation Initiative RCPP (see page 5). These funds will go towards land stewardship practices on 10,800 acres of land in the Hill County. Over the last two years, the Alliance has partnered in this effort which will ultimately bring over \$5 million to landowners participating in the program. Of the nine projects selected, \$404,000 is going to four projects in the Llano totaling 8,100 acres. If you wish to participate in the next round, be sure to attend the upcoming workshop on October 18.

**EVERYONE IS INVITED TO A
CELEBRATION OF LIFE FOR
DONNIE COLEMAN**



Saturday, October 5
We invite you to come early and stay late.
Gates will open at 3:30 and the service
will begin at 5 p.m.
The community is then invited to stay for
food and campfire on into the evening.

Fried catfish, BBQ and vegan plates will
be served after the memorial.

The Coleman home is located ten miles south of Junction
on Hwy 377, just past County Roads 140 and 150. Adjacent
parking will be accessed off of County Road 150 and golf carts
will be available for those needing mobility assistance.

C-38-1-P

Donnie was one of the original board members of the Alliance.