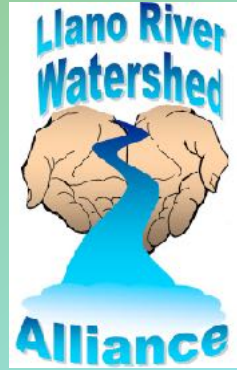


WATERSHED WEEK IN REVIEW



Reader Question

“You noted that the 1935 flood on the Llano reached a record 41.5 ft and 380,000 cfs on June 14, 1935. However, the USGS gage at Llano wasn’t installed until 1939. How does that work?”

USGS generally uses regression equations for estimating flood flows on ungaged rivers. Such equations were likely used to estimate the 1935 floods. However, USGS wasn’t totally relying on statistics; there was a gage near Castell from 1923 until 1939. This gage recorded the historic flood at 37 feet, or 388,000 cfs.

Llano Rebounds



For the past 16 years, Llano has hosted Starry Starry Night in Badu Park along the banks of the Llano. Things didn’t look very promising for this year’s event following the flood of October 16th. The storage building for the event was damaged and items scattered along the banks (above). But through the work of dedicated City crews and volunteers, the event is back on its feet. Well done everyone!



**STARRY STARRY NIGHTS
OPEN NOVEMBER 23 THRU NEW YEAR'S EVE 6 - 9 pm**

LRWA Board Elects New President



At Thursday night’s meeting of the Board, the Alliance elected the fifth president in its 10-year history. Andrew Burnard, was unanimously elected to replace Emily Neiman. Andrew is a native of Australia and moved with his wife Melissa to ‘a neglected piece of land’ on the North Llano in 2015 to raise chickens, quail, and vegetables and restore a 100-year old house moved from Junction. Former President Emily Neiman was elected Secretary. Previous Alliance Presidents are

Walter Curry, Scott Richardson, Znobias Wootan, and Emily Neiman. Thanks to all of them for their time and efforts.

James River Spring used in New Vodka

From article by Arianna Auber in Austin360.com

A co-founder of Deep Eddy Vodka launched Goodnight Loving Vodka last month. “It is distilled from corn and proofed with an essential ingredient : the pure water of an artesian spring on Osburn’s family ranch that flows at about 300 gallons per minute.”

“The water is about 1,000 years old, and because it’s from pre-industrialization times, it’s very pure. It is limestone filtered with bicarbonates, a process responsible for giving it a really great taste, which is what you taste when you have vodka. It is so important to have good water when you’re making vodka”

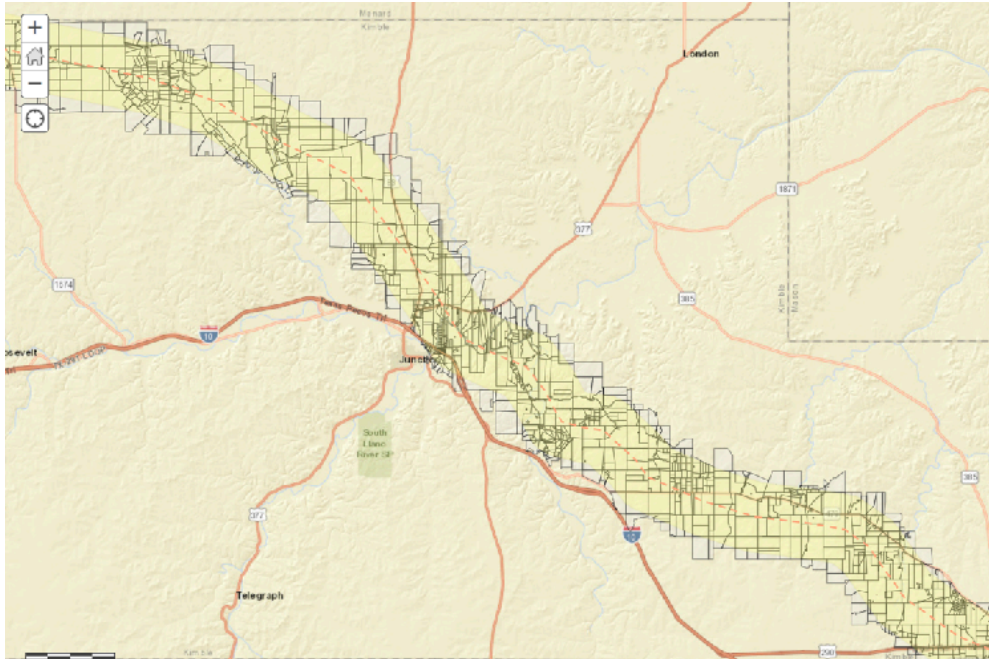
- Gary Crowell

The co-founders source the water together, heading to the ranch with a couple of huge jugs and a hose and pump once a month.

[read more...](#)



Natural Gas Pipeline Planned for Watershed



Kinder Morgan Texas Pipeline has plans to construct a 42-inch 430-mile pipeline that will pass through parts of the Llano Watershed. Most of the news about this pipeline has been centered on Wimberley and Fredericksburg, so we are included a link to this interactive map,

provided by Braun and Gresham. It is important to note that the information for Kimble County is currently based on a probable pipeline route and should not be considered 100% accurate at this time.

Connecting Watersheds and Water Supplies

*By Anna Huff
Meadows Center for Water and the Environment*

The heavy rainfall and subsequent flooding Central Texas faced a few weeks ago broke records and serve as an important reminder about the connection between land and water. ...Over 2 million people live in the Colorado River watershed, and many of the communities within it depend on the river for their municipal water...its total watershed area covers 15% of Texas.



Record rainfall in Llano and Burnet counties in the Texas Hill Country cause major flooding in Marble Falls on Oct. 16, 2016. Photo by Bob Daemrich for The Texas Tribune

[Read more in Trib Talk](#)